



**CLASSLINK**

Username: \_\_\_\_\_

Password: \_\_\_\_\_

**CANVAS/IAM**

Username: \_\_\_\_\_

Password: \_\_\_\_\_

**GOOGLE DRIVE**

Username: \_\_\_\_\_

Password: \_\_\_\_\_

**S**  
**t**  
**u**  
**d**  
**e**  
**n**  
**t**  
**L**  
**o**  
**g**  
**i**  
**n**  
**s**



**WHEN YOU GET HOME**

1. Go to Settings and connect your wifi
2. Login to the zScaler Login App

User: last name, first and middle initial, last 3 of student number @rss.k12.nc.us  
example: smithjl982@rss.k12.nc.us

Password: Student Number

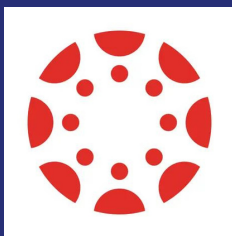
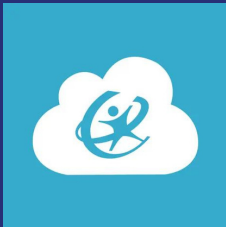


**CLASSLINK LAUNCHPAD**

Type Rowan in the search. Select Global - Rowan Salisbury SD (NC, 28144)

User: last name, first and middle initial, last 3 of student number Example: smithjl982

Password: Student Number



**CANVAS STUDENT**

The Canvas App is the RSS Learning Management System. Many of your assignments will be here.

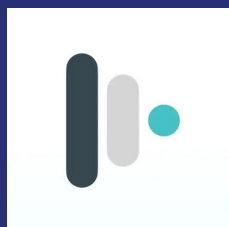
User: Student Number

Password: Summit123



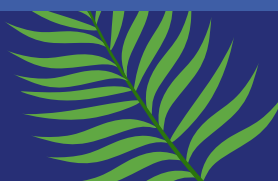
**ZOOM**

The Zoom App is one of the many meeting options your teacher may choose to use with your class. If your teacher uses Zoom, they will more than likely send this link in Canvas.



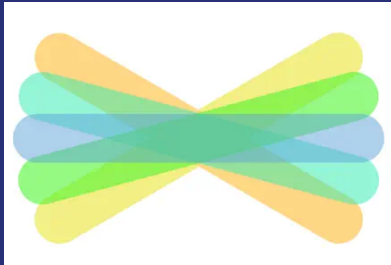
**MOSYLE SCHOOL**

This is where you can download RSS approved apps similar to Apple's AppStore.



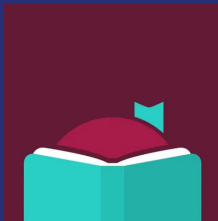


**S**  
**t**  
**u**  
**d**  
**e**  
**n**  
**t**  
  
**L**  
**o**  
**g**  
**i**  
**n**  
**s**



### **SEESAW (K-2 ONLY)**

Open Mosyle School. Download SeeSaw. Then open ClassLink using the instructions from above. Then click SeeSaw within ClassLink. Do not go directly to SeeSaw.



### **LIBBY**

All students have a Rowan Public Library card through RSS. Students can download Libby from Mosyle. Search Libby for Rowan Public Library. Log in using:

User: Student Number

Password: Last 4 of student number

Choose NC Digital Children's Library.

